

Free from landline  
**0800 032 0802**

Free from mobile  
**0330 6600 647**

**www.**  
**Roofline-design**  
**.co.uk**

## The Number 1 Choice for Fascias and Soffits



Fascias, Soffits & Guttering • Double Glazing • Flat Roofs  
Composite Doors • Tiled Conservatory Roofs • Tudor Boards

# Our Accreditations



FairTrades members go through a rigorous vetting procedure requiring the following:

We look at the length of time a business has been trading; we check to ensure that our member companies have a clean legal history and a good credit rating. We obtain, corroborate and continuously update customer references.



Checkatrade runs strict background checks on tradespeople before they can become members.

Once they join, members agree to have feedback from their customers put online for all to see. We've published over 3 million to date. Members promise to meet The Checkatrade Standard.



Scan the QR code on the back cover and view our reviews online



Without a doubt the best flat roofing system in the World.

As accredited Firestone EPDM flat roof installers, we can offer customers the benefit of a 20 year guarantee with an estimated life span of 50 years.



All TrustMark registered firms commit to working to Government endorsed standards.

Registered firms are vetted, inspected and commit to working to Government Standards. TrustMark gives essential advice to consumers to ensure they know how to find a quality tradesperson and don't fall into the trap created by rogue traders.



The Swish name is known and trusted by consumers as a symbol of quality.

It is a requirement that all Swish approved installers complete their fittings to a high quality standard, which allows them to take sufficient time to complete the job without added pressure or stress to work too quickly which could result in cutting corners and a lower standard finish.



Data Protection Act 1998

We follow a code of conduct with all our customers.

Your details including names, addresses, contact numbers and email addresses are never passed to any third parties.



## Welcome to Roofline Design

### Quality, Service, Value

At Roofline Design we follow the practice of TOTAL REPLACEMENT not "over cladding" - of the roofline area using high quality, maintenance free uPVC.

The advantage of doing this is you will have an attractive, durable, finished product in a range of colours. You can specify a colour to compliment, or contrast, the appearance of your home from the available range. We believe that the best way to promote and develop our business is to provide the best possible products and services. We will only install products approved by the **British Board of Agrément (BBA)**.



#### 20 Year Guarantee

We guarantee that our uPVC products will retain the appearance and function for **20 years** from the date of installation under natural weathering conditions. This guarantee is insurance backed and all products come with a manufacturers 20 year guarantee on along with the 20 year by guarantee by Roofline Design. You can rest assured that all of our installations are carried out to the highest possible standards.



#### Zero Deposit

We **do not take deposits** on all roofline installations as we are confident that the work we carry out will be up to the highest standards. We don't ask for payment until you are satisfied with the quality of our workmanship and professionalism.

**Call us for a FREE quotation 8am to 8pm, 7 days a week on 0800 032 0802 or alternatively email [info@roofline-design.co.uk](mailto:info@roofline-design.co.uk)**



# Fascias

Hard-wearing, low-maintenance PVC fascia board – designed for direct fixing to rafters.

Fascias, soffits and associated roofline products are essential components for your property. Exposed to the elements, they play a crucial role in protecting the roof space and prevent damp entering your home. They may go unnoticed most of the time, but old, rotten and discoloured timber fascias and soffits can spoil the look of your property and cause extensive damage to your property.

## Why choose PVCu fascia and soffits from Roofline Design?

Roofline components need to be durable, weather-resistant, attractive and due to their difficult-to-access location – low maintenance. PVC-U roofline products meet and exceed all of these requirements you need exactly when you need them.

## Endless colours and choices to smarten up and protect your home.

PVC-U fascias, soffits and roof trims will brighten up your property, giving it a fresh new lease of life. All roofline products are available in a range of colours and finishes to suit individual property styles and personal tastes. You can also choose plain flat boards for a simple, contemporary look, or sculpted 'ogee' style options for a more decorative finish.

Approved installers of:

**Swish**  
BUILDING PRODUCTS

**eurocell**  
All together better



Endless amount of materials to hand



## Having your fascias replaced could not be simpler

- ✓ First contact us and we will arrange a quick 15 minute FREE quotation at a time to suit you (no high pressure sales people).
- ✓ If you are happy with everything, we email you (or post) your order confirmation with an installation date, with no deposit required.

### On the day of the installation we do the following:

- ✓ Completely remove all your old rotten timber roofline, fascias, soffits, guttering and barge boards.
- ✓ Slide the first row of tiles back and remove all the old corroded felt and debris that will have built up over the years.
- ✓ Dress and remove all the rotten spar ends with secure fixings, then build up or cut them back to make sure they are all level using string lines.
- ✓ Attach 9mm solid PVCu soffit boards to the underside of the spars.
- ✓ Attach 18mm solid PVCu fascia boards to the front of the spars.
- ✓ Attach 18mm solid PVCu barge boards.
- ✓ A new concealed ventilation system is installed to the top of the fascias (bringing your roof up to the new building regulations and allowing your roof to breath).

- ✓ Introduce a new plastic felt tray which directs the rainfall from the tiles into the gutter.
- ✓ Install bird guard if required and requested.
- ✓ Replace your roof tiles back into the correct position.
- ✓ Replace all box ends with single piece box ends.
- ✓ Install new PVCu barge boards and soffit boards to replace all corroded timbers.
- ✓ Inspect, replace and patch up all cement that has been dislodged.
- ✓ Supply and install dry verge end caps (if requested at a cost).
- ✓ Install new guttering at the correct angle to allow the water to disperse more efficiently.
- ✓ Install new fall pipes.
- ✓ Inspect the roofline installation with yourself and the fitting team upon completion.
- ✓ Tidy up and remove all the rubbish from site.
- ✓ Supply you with a receipt and 20 year guarantee.
- ✓ Then simply pay the invoice.

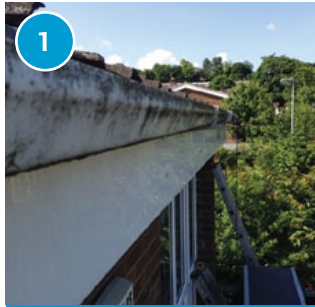


1. Gutter
2. Dry Verge
3. Cladding
4. Box End
5. Outlet
6. Gable End
7. Soffit Board
8. Stop End
9. Fascia Board
10. Fall Pipe
11. Barge Board





# How we upgrade your Fascias in 18 steps



1

Take a look at what damage 'over cladding' can cause to your roof and property.



2

It causes the roof to sweat as a result of no ventilation in the void.



3

The lack of ventilation causes damp to the rafters and your property.



10

The gutter brackets are attached to the fascias with a small pitch so the water can drain correctly.



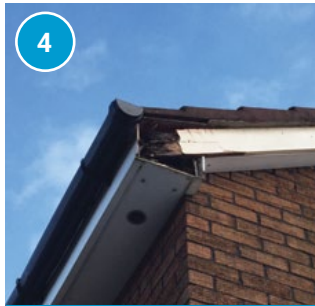
11

The guttering is installed to the fascia board just below the concealed ventilation.



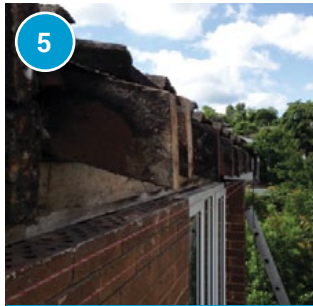
12

The new plastic felt tray is installed over the ventilation system running into the gutter.



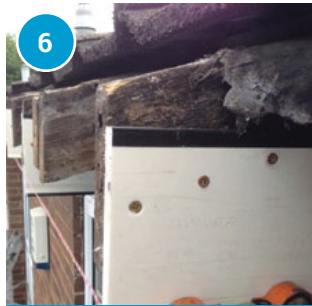
4

Your fascia and barge boards can collapse which in time will cause major damage to your property.



5

We completely remove all the fascias, soffits and gutters so the damage can be inspected.



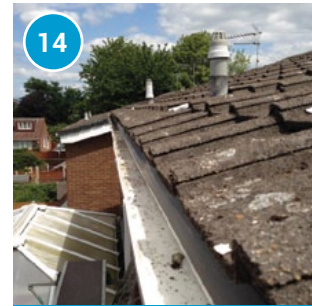
6

Remove all corroded spar ends and felt then secure solid PVCu supports to solid timber.



13

Where possible bird guards are installed over the felt tray.



14

The tiles are re-seated back into position so all that can be seen is the new felt tray.



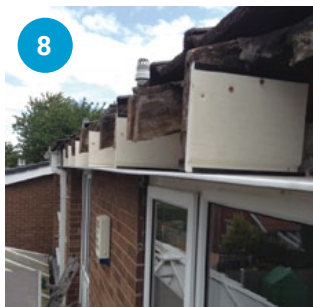
15

The gables are re-constructed using a single piece box end and barge boards.



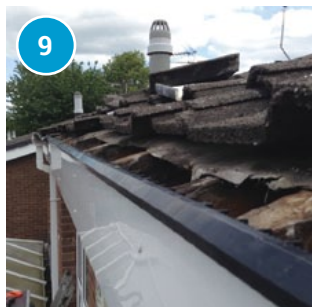
7

Align everything using levels and string lines so we can start putting everything back together.



8

We attach 9mm solid flat PVCu soffits to the prepared supports.



9

Next goes on the 18mm solid PVCu fascias with a concealed top ventilation system.



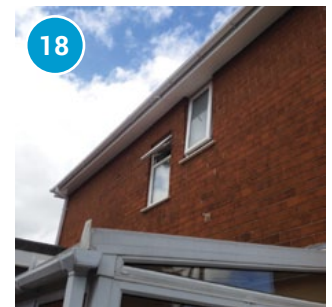
16

The soffits are sealed to the property to stop any dust blowing through.



17

The final result to the gables is amazing with the new barge boards leaving crisp new lines.

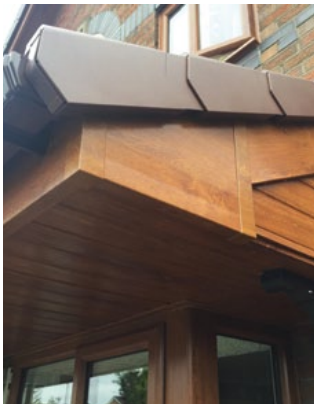


18

Your new fascias and soffits will look amazing too. All this with a 20 year guarantee.



Recently Completed Projects





Recently Completed Projects





Recently Completed Projects





## Firestone Flat Roofs



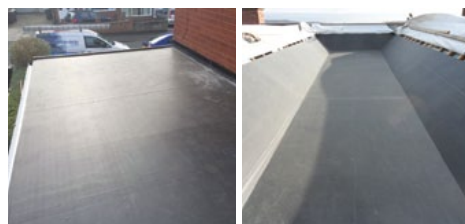
So what is this easy rubber roof system? **Firestone RubberCover EPDM** is a 100% cured single-ply roofing membrane made of a synthetic rubber Ethylene-Propylene-Diene Terpolymer.

Since 1980, more than 1,000,000,000 square metres of Firestone EPDM membranes have been successfully installed on commercial, industrial and residential roofs worldwide. There are various roll sizes, the biggest being 15m wide and 61m long.

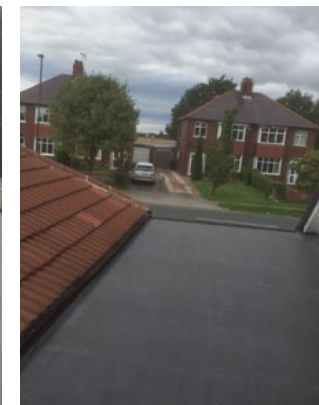
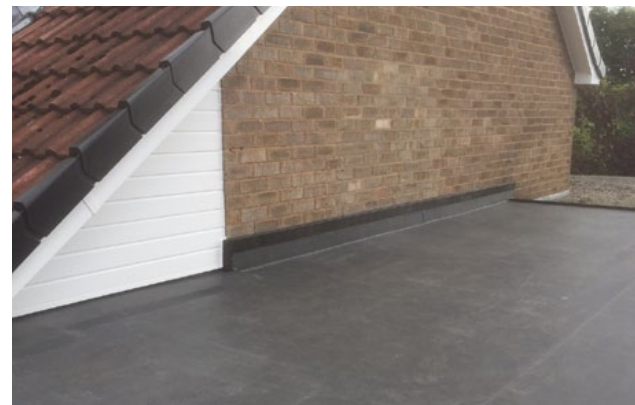
The membranes offer unmatched resistance to UV radiation, ozone, alkali rains and high or low temperatures. Recent studies show that the membrane has a life expectancy up to more than 50 years, even when exposed to sunlight.

- ✓ Joints will not fail. Not a single drop of water will pass through this.
- ✓ Totally inert and UV stable
- ✓ Will not crack or perish
- ✓ Environmentally friendly
- ✓ Completely maintenance free
- ✓ Can overlay current waterproofing (providing the decking below is fine).
- ✓ Fantastic value for money

Approved installers of:



## Recently Completed Firestone Flat Roof Projects





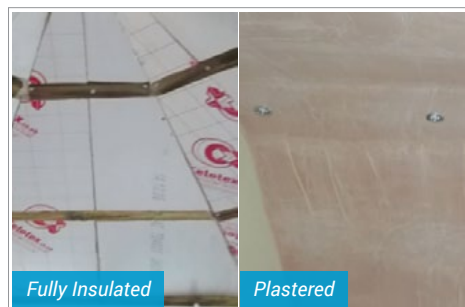
# Tiled Conservatory Roofs

The Warmtight roof system has been designed to be installed as an alternative and affordable tiled conservatory roof which converts your old conservatory into a usable all year round part of your home.

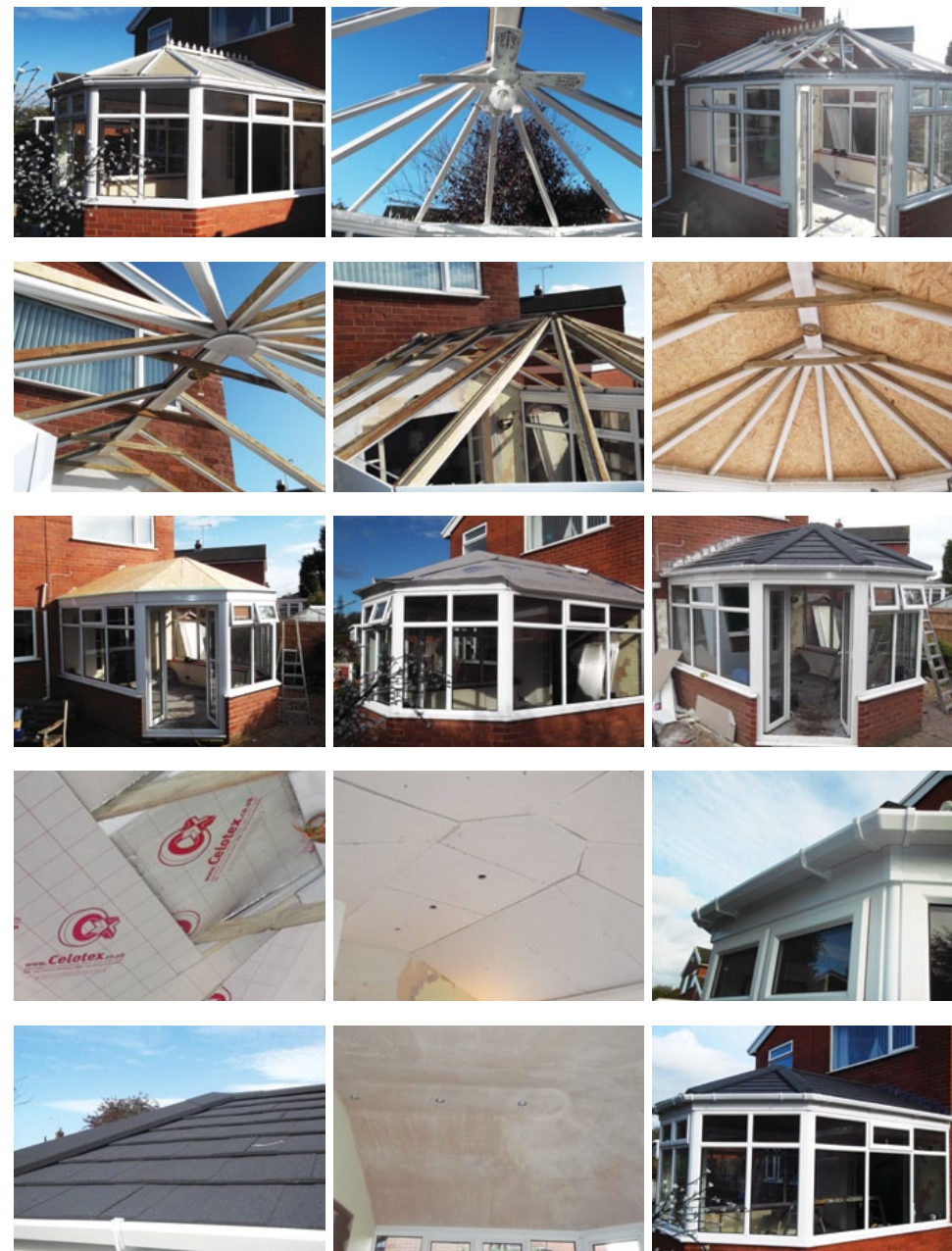
We can build you a new conservatory roof from scratch so you can trust us to provide this complete service from start to finish. If you have an existing conservatory, you will probably agree that it is too hot in summer and very cold in the winter.

With the incredible u-value of the Warmtight roof system you will never experience these extreme temperature changes ever again! This roofing system costs less than you think and with a choice of vibrant colours it can match most existing roof tiles.

- ✓ Save up to 80% heat loss in winter
- ✓ Create a cooler room in summer
- ✓ Reduce fading of furniture with reduced glare
- ✓ Unlimited lighting configurations
- ✓ Fast installation program, move in within 4 days
- ✓ Tiled external roof
- ✓ Ultralight roofing system
- ✓ Eliminate that annoying noise from the rain
- ✓ Fully insulated



## Recently Completed Tiled Conservatory Roof Project





# Tudor Beams



All of our Polyurethane Replica Wood is manufactured to a high quality using textured grains identical to natural oak.

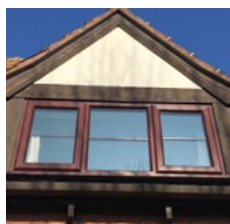
Replica Wood is designed to replace your rotting, unsightly wood exteriors to give you a long lasting, low maintenance alternative, that saves you money and adds value to your home. Available in a range of sharp, long lasting Tudor style colours. Using our unique manufacturing process, the coloured surface is chemically bonded to the polyurethane core. Bespoke colours can be made to order.

Unlike normal wood, which suffers considerably at the hands of lashing rains and harsh winters, our Replica Wood is hardly affected. Replica Wood lasts considerably longer than normal wood and has a 15 year Guarantee.

- ✓ Low maintenance
- ✓ Oak grain
- ✓ Long lasting
- ✓ Lightweight
- ✓ Weather resistant
- ✓ Money saving
- ✓ Tudor style
- ✓ 15 year guarantee

**REPLICA WOOD**  
MOCK TUDOR SHIPLAP CLADDING

Before



After



Authentic Colours



Black

Chocolate Brown

Rosewood

Golden Oak

## Recently Completed Tudor Beam Projects





# Windows

We supply a large range of double glazed windows. Our windows come in various coloured PVCu with reinforced steel, insurance approved security and energy ratings.

The quality of your double glazing effects the economy and security of your home. You should choose your new windows very carefully to bring you peace of mind.

At Roofline Design, we understand fully how important this is. Over the years, we have worked hard to make sure that our very extensive range of highest quality PVCu windows provide the best range of colour options for your home. Our windows bring unparalleled security and energy efficiency with 'A' rated certification.

- ✓ 20 year guarantee
- ✓ 'A' Rated
- ✓ High security locking
- ✓ Purpose built
- ✓ Quick installation
- ✓ Fully trained installers
- ✓ Fairtrade approved
- ✓ TrustMark approved

**Duraflex**  
Your Success, Our Future



## Colours and Styles Available





# Doors

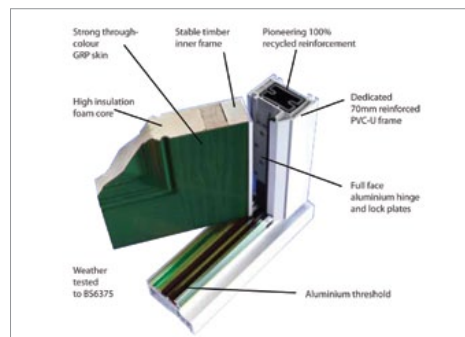


High quality composite doors from Roofline Design. Choose your perfect composite door from our range of beautiful styles.

Composite doors are a modern, sustainable alternative to traditional hardwood with lots of extra benefits. The outer skin is made from a durable glass reinforced plastic (GRP) with a rigid foam core.

This means the door is virtually draught-free and soundproof – keeping your home quiet and insulating it up to 6 times better than a wooden door. We have endless beautiful composite door designs to choose from plus a range of glass and door furniture to complete the look.

- ✓ Made from glass reinforced polymer (GRP)
- ✓ Maintenance Free
- ✓ Range of styles, glazing options and designs
- ✓ Kitemarked hardware
- ✓ Multipoint hooked door locks
- ✓ Comply with Security Standard PAS 24
- ✓ Weather tested to BS6375
- ✓ Quick installation



## Colours and Styles Available



Arundel



Beaumaris



Carisbrooke



Dartmouth



Edinburgh



Fraser



Manorbier



Newark



Orford



Pembroke



Knaresborough



Lindisfarne



Glenbuchat



Harlech



Ingmire



Johnstone



Quatford

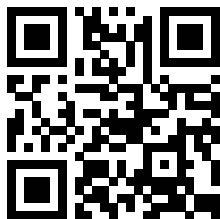


Stirling





Proud members of  
**Checkatrade.com**  
Where reputation matters



Scan the QR code using  
your smart phone



Presented By: \_\_\_\_\_ Date: \_\_\_\_\_

### Roofline Design (UK) Ltd

**Call:** 0800 032 0802 / 0330 6600 647

**Email:** [info@roofline-design.co.uk](mailto:info@roofline-design.co.uk)

**Visit:** [www.roofline-design.co.uk](http://www.roofline-design.co.uk)

**Head Office:** 25A Lockwood Way, Leeds, LS11 5TH

**Call us for a FREE quotation 8am - 8pm - 7 days a week**  
**The Number 1 Choice for Fascias and Soffits**



**Checkatrade.com**

Fascias, Soffits & Guttering • Double Glazing • Flat Roofs  
Composite Doors • Tiled Conservatory Roofs • Tudor Boards